



**India Meteorological Department
(Ministry of Earth Sciences)**

NATIONAL BULLETIN NO. 36 (BOB/07/2024)

TIME OF ISSUE: 0900 HOURS IST

DATED: 01.12.2024

FROM: INDIA METEOROLOGICAL DEPARTMENT (FAX NO. 24643965/24699216/24623220)

**TO: CONTROL ROOM, NDM, MINISTRY OF HOME AFFAIRS (FAX.NO. 23093750)
CONTROL ROOM NDMA (FAX.NO. 26701729)
CABINET SECRETARIAT (FAX.NO.23012284, 23018638)
PS TO HON'BLE MINISTER FOR S & T AND EARTH SCIENCES (FAX NO.23316745)
SECRETARY, MOES (FAX NO. 24629777)
H.Q. (INTEGRATED DEFENCE STAFF AND CDS) (FAX NO. 23005137/23005147)
DIRECTOR GENERAL, DOORDARSHAN (23385843)
DIRECTOR GENERAL, AIR (23421105, 23421219)
PIB MOES (FAX NO. 23389042)
UNI (FAX NO. 23355841)
D.G. NATIONAL DISASTER RESPONSE FORCE (NDRF) (FAX NO. 26105912, 2436 3260)
DIRECTOR, PUNCTUALITY, INDIAN RAILWAYS (FAX NO. 23388503)
CHIEF SECRETARY, ANDAMAN & NICOBAR ISLANDS (FAX NO. 03192-232656)
CHIEF SECRETARY, TAMIL NADU (FAX NO. 044-25672304)
CHIEF SECRETARY, ANDHRA PRADESH (FAX NO. 0863-2441029)
CHIEF SECRETARY, PUDUCHERRY (FAX NO. 0413-2334145)
CHIEF SECRETARY, ODISHA (FAX NO. 0674-2536660)**

Sub: Cyclonic Storm "FENGAL" [pronounced as FEINJAL] over north coastal Tamil Nadu & Puducherry (Cyclone Warning: **Red Message for North Tamil Nadu, Puducherry and adjoining south Andhra Pradesh)**

The Cyclonic Storm "FENGAL" [pronounced as FEINJAL] over north coastal Tamil Nadu & Puducherry remained practically stationary during past 6 hours and lay centered at 0530 hours IST of today, the 1st December 2024 over the same region near latitude 12.0°N and longitude 79.8°E, close to Puducherry, about 30 km north of Cuddalore, 40 km east of Villupuram and 120 km south-southwest of Chennai.

It is likely to move westwards slowly and weaken gradually into a deep depression over north coastal Tamil Nadu and Puducherry during the next 6 hours.

The system is being continuously monitored by the Doppler Weather Radar at Chennai & Karaikal.

Forecast track and intensity are given in the following table:

Date/ Time (IST)	Position (Lat. °N/ long. °E)	Maximum sustained surface wind speed (Kmph)	Category of cyclonic disturbance
01.12.24/0530	12.0/79.8	60-70 gusting to 80	Cyclonic Storm
01.12.24/1130	12.0/79.7	55-65 gusting to 75	Deep Depression
01.12.24/1730	12.0/79.5	45-55 gusting to 65	Depression

Warnings:

(i) Rainfall Warning:

Tamil Nadu & Puducherry: Light to moderate rainfall at many places with **heavy to very heavy rainfall** at isolated places over interior Tamil Nadu & Puducherry on 01st December, and **heavy rainfall** at isolated places over Tamil Nadu on 02nd and 03rd December.

Coastal Andhra Pradesh: Light to moderate rainfall at many places with **heavy rainfall** at isolated places on 01st December.

Rayalaseema: Light to moderate rainfall at many places with **heavy rainfall** at isolated places on 01st December.

South Interior Karnataka: Light to moderate rainfall at many places with **heavy to very heavy rainfall** at isolated places on 01st & 2nd December.

Kerala: Light to moderate rainfall at many places with isolated heavy rainfall is likely on 1st December, **heavy to very heavy rainfall** at isolated places on 2nd & 3rd December.

(ii) Wind warning:

- **Southwest Bay of Bengal:** Gale wind speed reaching 60-70 gusting to 80 is prevailing over southwest Bay of Bengal. It is likely to decrease becoming squally wind speed reaching 55-65 kmph gusting to 75 kmph from morning of 1st December and decrease gradually thereafter.
- **Adjoining areas of westcentral Bay of Bengal:** Squally wind speed reaching 45-55 kmph gusting to 65 kmph is likely to prevail over adjoining areas of westcentral Bay of Bengal till morning of 1st December. It is likely to decrease thereafter.
- **Along & off North Tamil Nadu – Puducherry and adjoining South Andhra Pradesh coasts:** Gale wind speed reaching 60-70 kmph gusting to 80 kmph is prevailing along & off **North Tamil Nadu - Puducherry and adjoining South Andhra Pradesh coasts**. It is likely to decrease becoming 55-65 kmph gusting to 75 kmph from morning of 1st December and decrease gradually thereafter.
- **Coastal districts of north Tamil Nadu & south Andhra Pradesh:** Gale wind speed reaching 60-70 gusting to 80 kmph is prevailing over coastal districts of north Tamil Nadu (**Tiruvallur, Chennai, Chengalpattu, Villupuram, Puducherry Cuddalore and Mayiladuthurai**). It is likely to become squally wind speed reaching 55-65 kmph gusting to 75 kmph from morning of 1st December and decrease gradually further thereafter.
- **Along & off South Tamil Nadu coast and Gulf of Mannar:** Squally wind speed reaching 40-50 kmph gusting to 60 kmph is likely to prevail till morning of 1st December and gradually decrease thereafter.

(iii) Sea condition:

High to very Rough Sea conditions is likely to prevail over southwest Bay of Bengal adjoining areas of westcentral Bay of Bengal, Gulf of Mannar and along & off Tamil Nadu-Puducherry, South Andhra Pradesh and north Sri Lanka coasts till morning of 1st December. It will gradually improve becoming Rough from forenoon of 1st December.

(v) Storm surge Warning (Graphics Attached):

Storm surge of about 0.5 meter height above the astronomical tide is likely to inundate the low-lying areas of the coastal districts of north Tamil Nadu, Puducherry and adjoining south Andhra Pradesh till morning of 1st December.

(vi) Fisherman warning (Graphics Attached):

- Total suspension of fishing operations.
- Fishermen are advised not venture into southwest Bay of Bengal adjoining areas of westcentral Bay of Bengal, Gulf of Mannar and along & off Tamil Nadu-Puducherry, South Andhra Pradesh and East Sri Lanka coasts till forenoon of 1st December.

(iv) Flash Flood Guidance (Graphics Attached):

24 hours Outlook for the Flash Flood Risk (FFR) till 0530 IST of 02-12-2024 :

Moderate to High flash flood risk likely over few watersheds & neighbourhoods of following Meteorological Sub-divisions during next 24 hours.

Coastal Andhra Pradesh & Yanam–Thirupati and Nellore districts.

Rayalaseema- Chittoor and Kadapa districts.

Tamil Nadu - Puducherry & Karaikal– Chennai, Tiruvallur, Vellore, Kanchipuram, Tiruvannamalai, Villupuram, Puducherry, Cuddalore, Ariyalur, Perambalur and Karaikal districts.

Surface runoff/ Inundation may occur at some fully saturated soils & low-lying areas over Area of Concern (AoC) as shown in map due to expected rainfall occurrence in next 24 hours.

(vii) Impact Expected [over coastal districts of North Tamil Nadu (Tiruvallur, Chennai, Chengalpattu, Puducherry Cuddalore, Mayiladuthurai, Nagappattinam, Dharampuri, Krishnagiri and Villupuram) and Andhra Pradesh (Tirupati, Nellore, Kadapa and Prakasham)]

- Damage to thatched huts.
- Minor damage to power and communication lines due to breaking of branches.
- Major damage to Kutcha and minor damage to Pucca roads.
- Some damage to paddy crops, banana, papaya trees and orchards.
- Sea water inundation in low lying areas after erosion of Kutcha embankments.
- Localized Flooding of roads, water logging in low lying areas and closure of underpasses mainly in urban areas of the above region.
- Occasional reduction in visibility due to heavy rainfall.
- Disruption of traffic in major cities due to water logging in roads leading to increased travel time.
- Damage to horticulture and standing crops in some areas due to inundation.
- Breaking of tree branches, uprooting of small trees including banana, papaya and drumstick.

(viii) Action Suggested:

- Total suspension of fishing operations.
- Fishermen are advised not venture into southwest Bay of Bengal adjoining areas of westcentral Bay of Bengal, Gulf of Mannar and along & off Tamil Nadu-Puducherry, South Andhra Pradesh and East Sri Lanka coasts till forenoon of 1st December.
- The ships plying over the area need to be regulated.
- People should stay in safe places during 30th morning to evening.
- Check for traffic congestion on your route before leaving for your destination.
- Follow any traffic advisories that are issued in this regard.
- Avoid going to areas that face the water logging problems often.
- Special care may be taken for fishing ponds and poultrys over coastal areas.
- Avoid staying in vulnerable structure.

(ix) Agromet advisories:

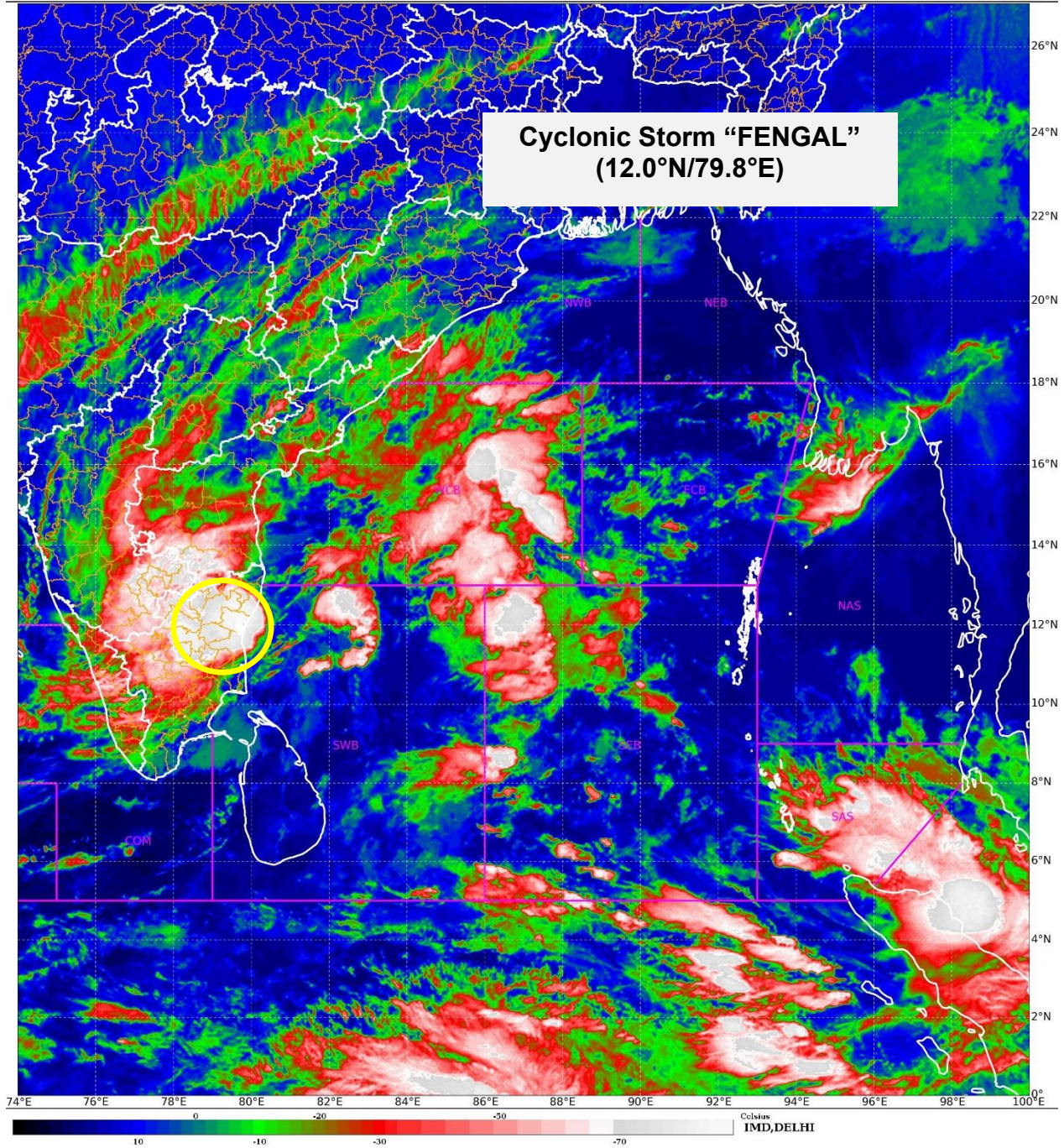
Provide adequate drainage facilities for the removal of excess water from rice, cotton, sugarcane, turmeric and vegetable fields, coconut and banana orchards. Provide mechanical support to banana plants to prevent lodging.

- Make arrangements to drain out excess water from the standing crop fields and fruit orchards in Kerala and Coastal Andhra Pradesh.
- Harvest the matured crops and keep it in safe place.
- Provide mechanical support to horticultural crops and staking to vegetables.

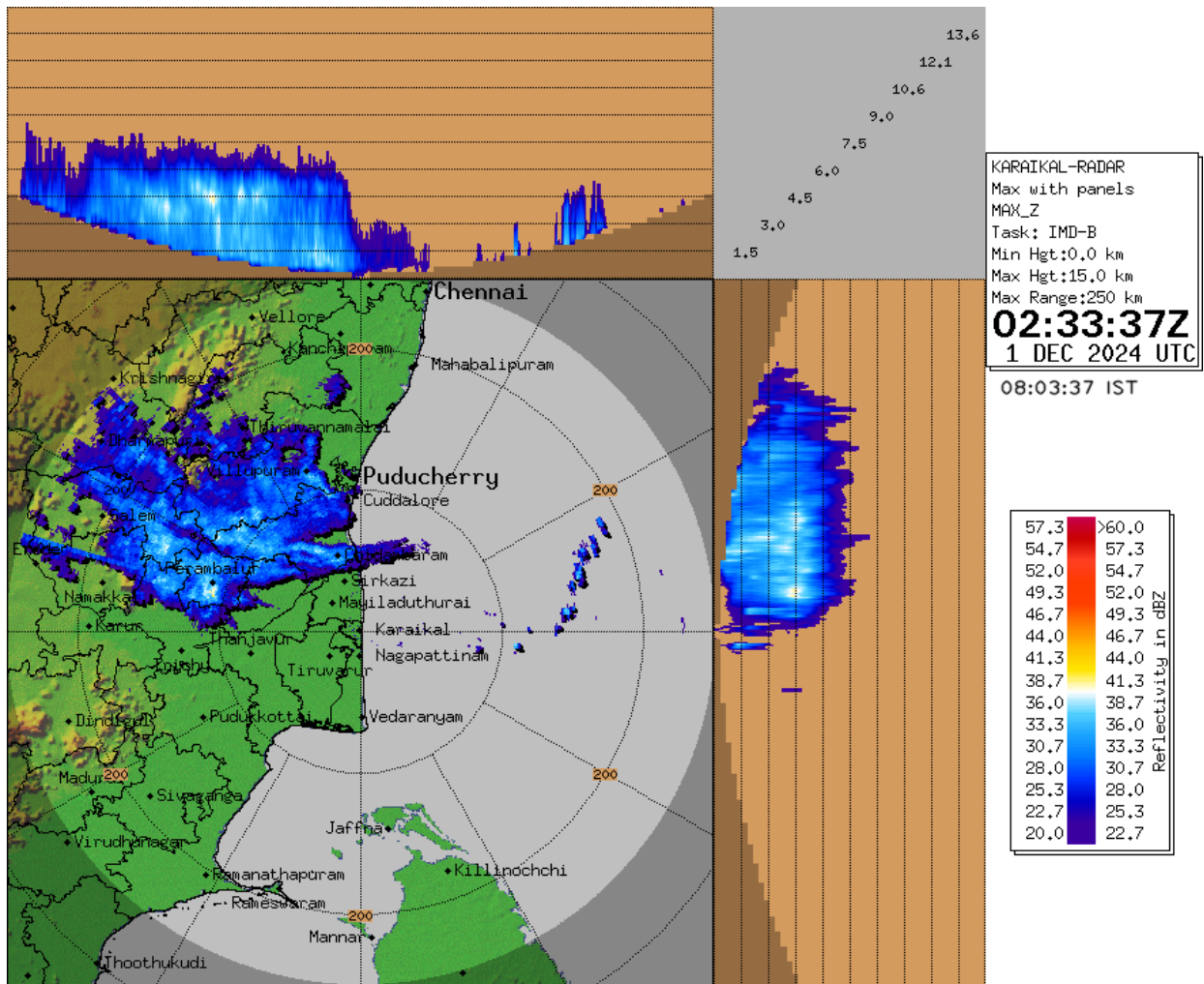
Next bulletin will be issued at 1200 hours IST of today, the 1st December, 2024.

**(Dr. Shashi Kant)
Scientist D, RSMC, New Delhi**

*Copy to: ACWC Kolkata/ACWC Chennai/CWC Bhubaneswar/MC, Amaravati/MC,
Thiruvananthapuram/CWC, Vishakhapatnam*



Doppler Weather Radar Observation (Max Z) at Karaikal





OBSERVED AND FORECAST TRACK ALONG WITH CONE OF UNCERTAINTY OF CYCLONIC STORM "FENGAL" OVER NORTH COASTAL TAMIL NADU AND PUDUCHERRY BASED ON 0000 UTC (0530 HRS. IST) OF 01st DECEMBER, 2024.



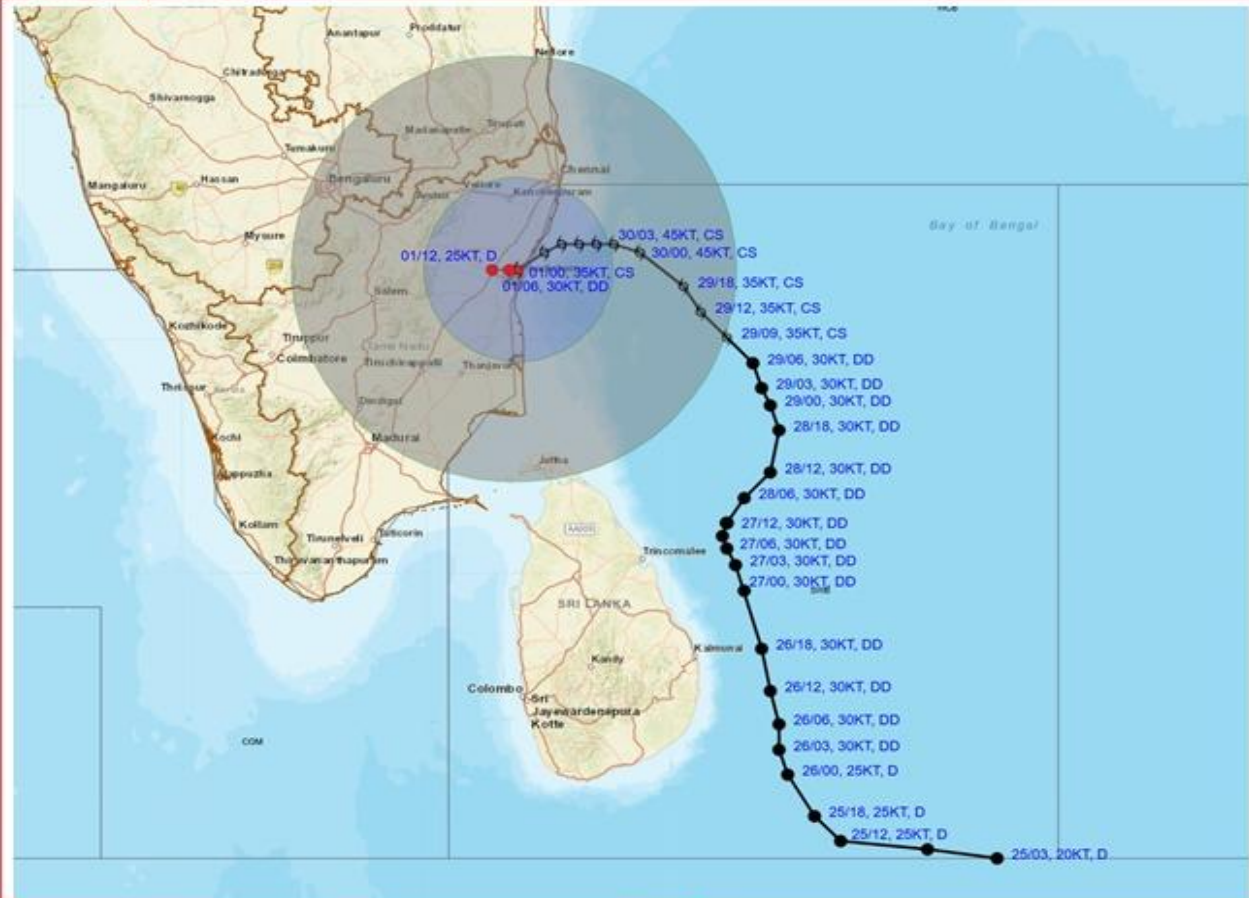
DATE/TIME : IN UTC
 IST : UTC + 0530
 KT : NAUTICAL MILE S/HOUR = 1.85 KM/HOUR
 LPA : LOW PRESSURE AREA
 WML : WELL MARKED LOW PRESSURE AREA
 D : DEPRESSION (17-27 KT)
 DD : DEEP DEPRESSION (28-33 KT)
 CS : CYCLONIC STORM (34-47 KT)
 SCS : SEVERE CYCLONIC STORM (48-63 KT)
 VSCS : VERY SEVERE CYCLONIC STORM (64-89 KT)
 ESCS : EXTREMELY SEVERE CYCLONIC STORM (90-119 KT)
 SuCS : SUPER CYCLONIC STORM (≥120 KT)

- LESS THAN 34 KT
- 34-47 KT
- ≥ 48 KT
- OBSERVED TRACK
- FORECAST TRACK
- CONE OF UNCERTAINTY

Forecast	DISTANCE (KM) AND DIRECTION FROM STATIONS		
	MAHABALIPURAM	MO PONDICHERRY	CHENNAI/MINAMB AKKAM
01.12.24/0000	80, SSW	0, NNW	120, SSW
01.12.24/0600	90, SW	10, WNW	120, SSW
01.12.24/1200	100, SW	30, W	130, SW



OBSERVED AND FORECAST TRACK ALONGWITH QUADRANT WIND DISTRIBUTION OF CYCLONIC STORM "FENGAL" OVER NORTH COASTAL TAMIL NADU AND PUDUCHERRY BASED ON 0000 UTC (0530 HRS. IST) OF 01st DECEMBER, 2024.



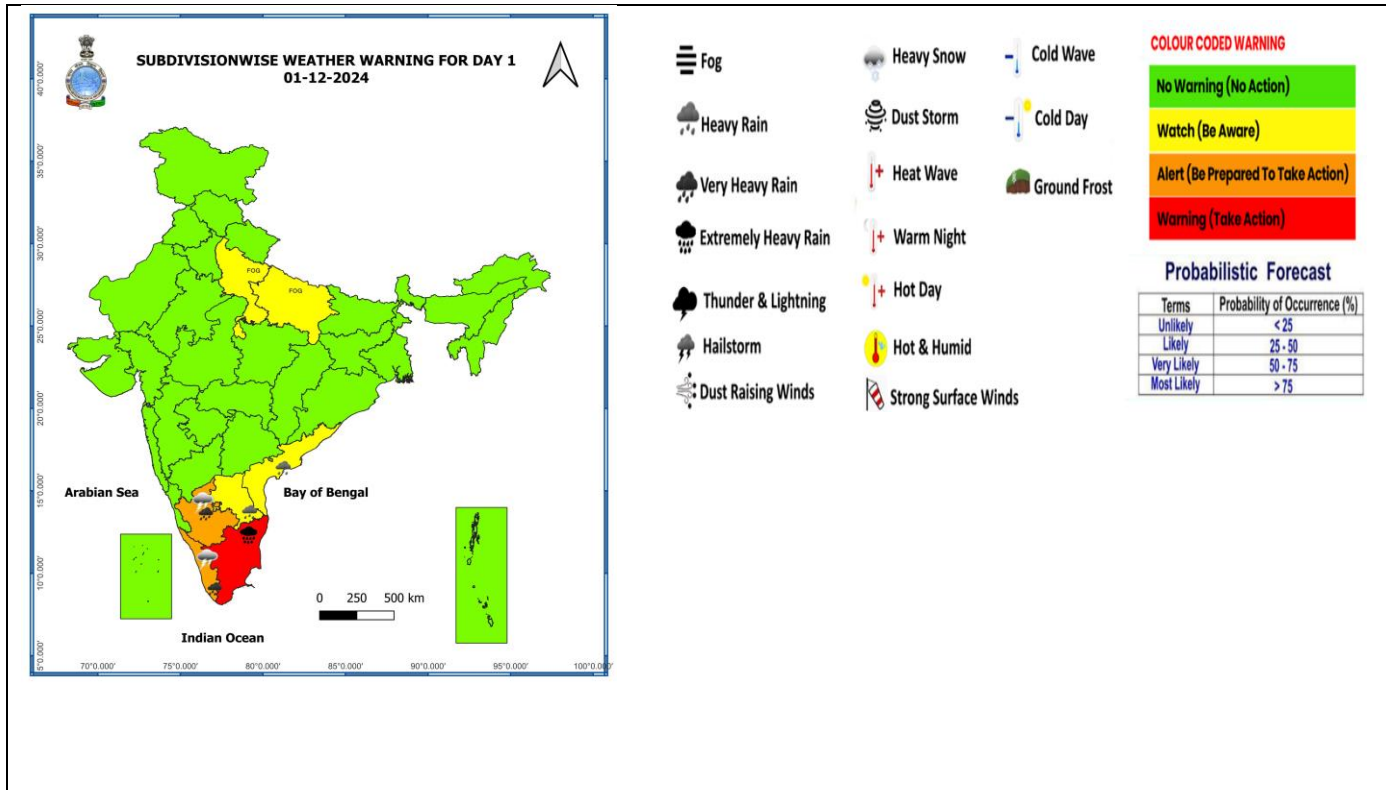
DATE/TIME : IN UTC
 IST : UTC + 0530
 KT : NAUTICAL MILE S/HOUR = 1.85 KM/HOUR
 LPA : LOW PRESSURE AREA
 WML : WELL MARKED LOW PRESSURE AREA
 D : DEPRESSION (17-27 KT)
 DD : DEEP DEPRESSION (28-33 KT)
 CS : CYCLONIC STORM (34-47 KT)
 SCS : SEVERE CYCLONIC STORM (48-63 KT)
 VSCS : VERY SEVERE CYCLONIC STORM (64-89 KT)
 ESCS : EXTREMELY SEVERE CYCLONIC STORM (90-119 KT)
 SuCS : SUPER CYCLONIC STORM (≥ 120 KT)

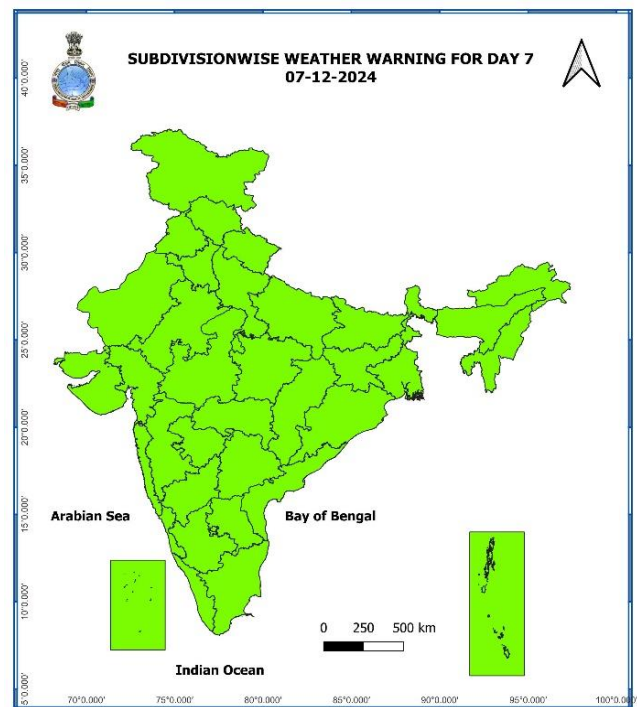
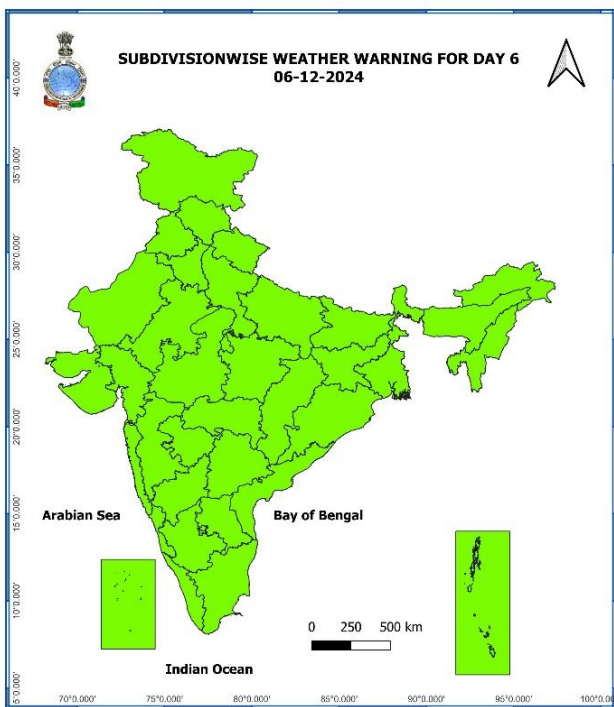
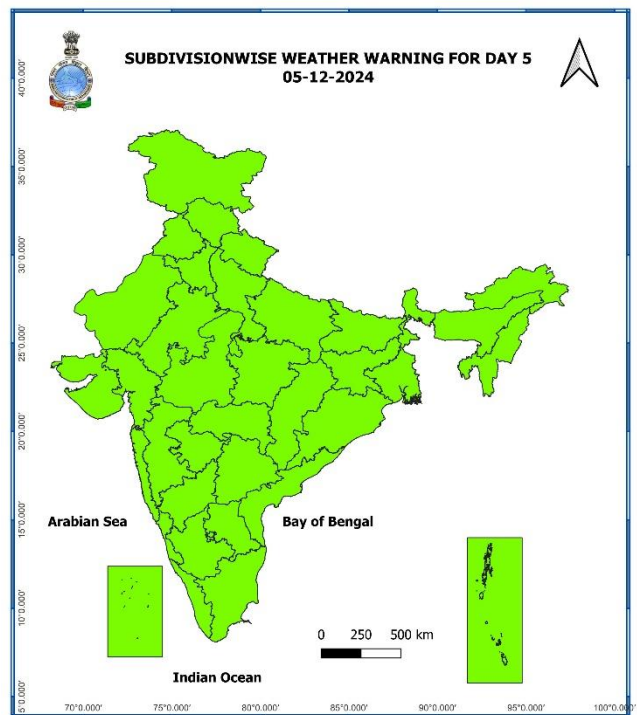
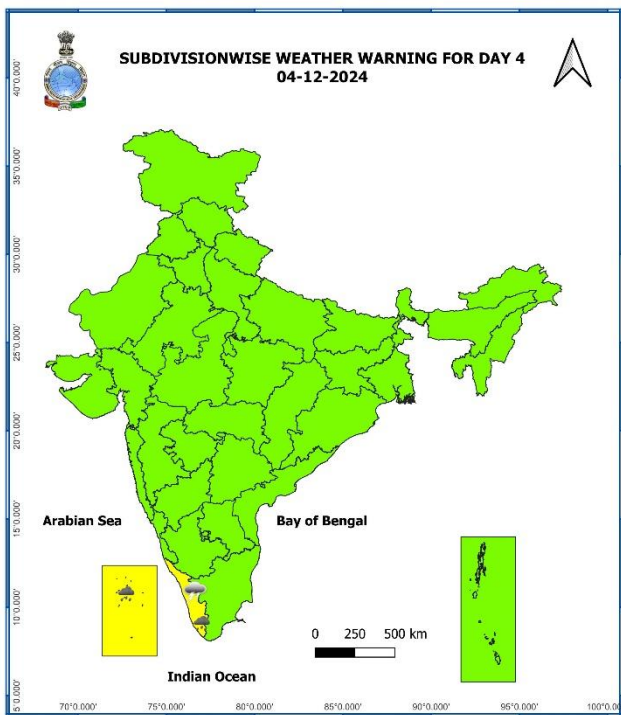
● LESS THAN 34 KT
 ○ 34-47 KT
 ● ≥ 48 KT
 — OBSERVED TRACK
 — FORECAST TRACK
 ○ CONE OF UNCERTAINTY
AREA OF MAXIMUM SUSTAINED WIND SPEED:
 ■ 28-33 KT (52-61 KMPH)
 ■ 34-49 KT (62-91 KMPH)
 ■ 50-63 KT (92-117 KMPH)
 ■ ≥ 64 KT (≥ 118 KMPH)

IMPACT OVER THE SEA

MSW (knot/kmph)	Impact	Action
28-33 (52-61)	Very rough seas	Total suspension of fishing operations
34-49 (62-91)	High to very high seas	Total suspension of fishing operations
50-63 (92-117)	Very high seas	Total suspension of fishing operations
≥ 64 (≥ 118)	Phenomenal	Total suspension of fishing operations

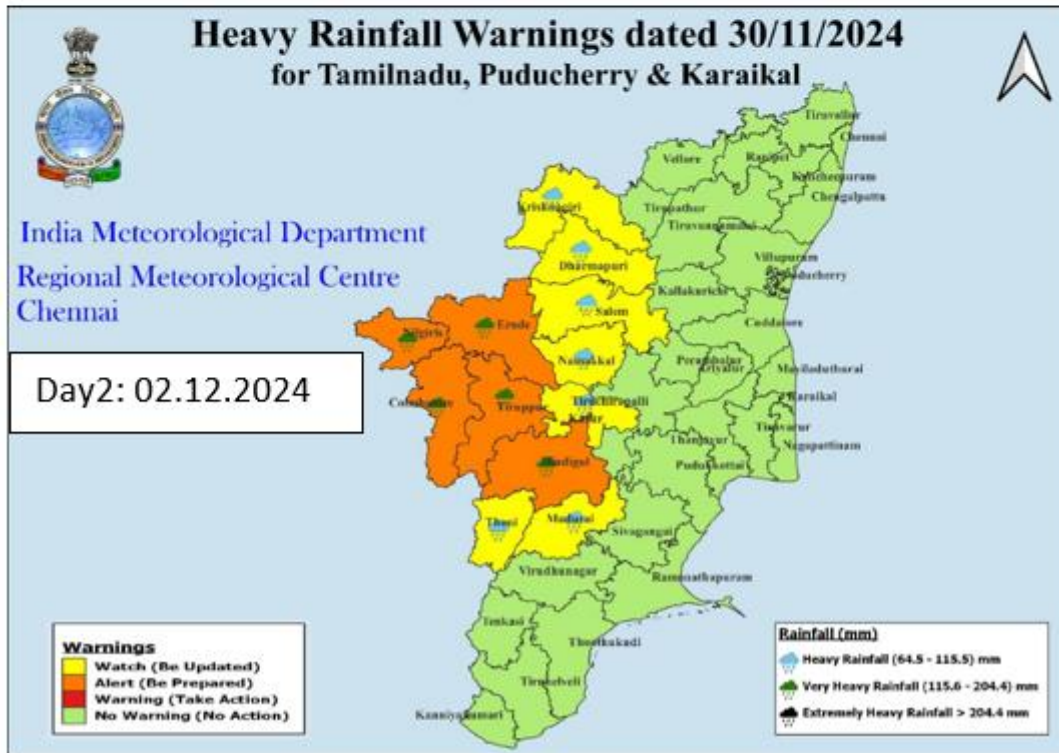
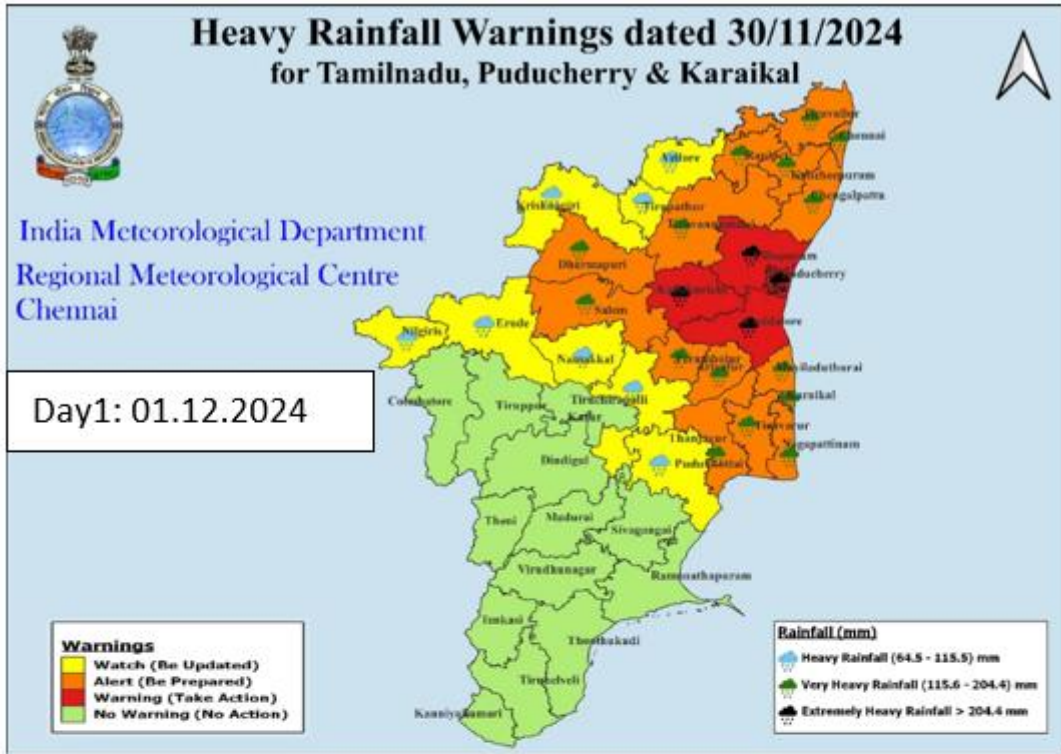
Weather Warning Graphics





- Action may be taken based on **ORANGE AND RED COLOUR** warnings.
- Vulnerable regions likely urban and hilly areas action may be initiated for heavy rainfall warning.
- As the lead period increases forecast accuracy decreases.

District-Wise Warning Graphics of Tamil Nadu & Puducherry



Flash Flood Guidance

24 hours Outlook for the Flash Flood Risk (FFR) till 0530 IST of 02-12-2024 :

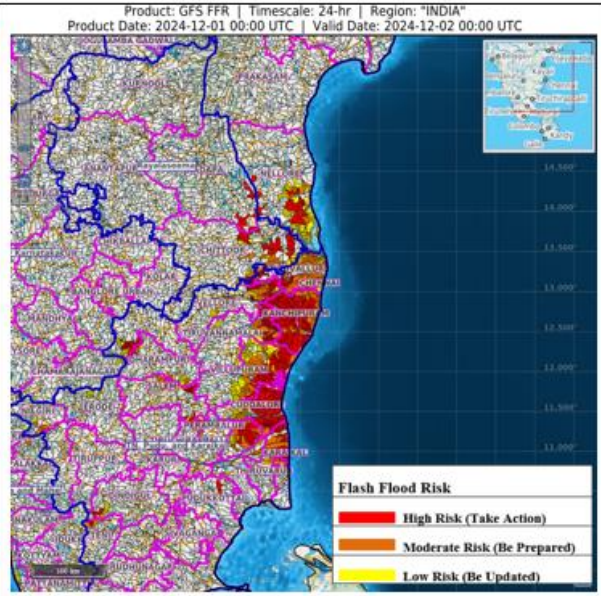
Moderate to High flash flood risk likely over few watersheds & neighbourhoods of following Meteorological Sub-divisions during next 24 hours.

Coastal Andhra Pradesh & Yanam – Thirupati and Nellore districts.

Rayalaseema - Chittoor and Kadapa districts.

Tamil Nadu - Puducherry & Karaikal – Chennai, Tiruvallir, Vellore, Kanchipuram, Tiruvannamalai, Villupuram, Puducherry, Cuddalore, Ariyalur, Perambalur and Karaikal districts.

Surface runoff/ Inundation may occur at some fully saturated soils & low-lying areas over Area of Concern (AoC) as shown in map due to expected rainfall occurrence in next 24 hours.



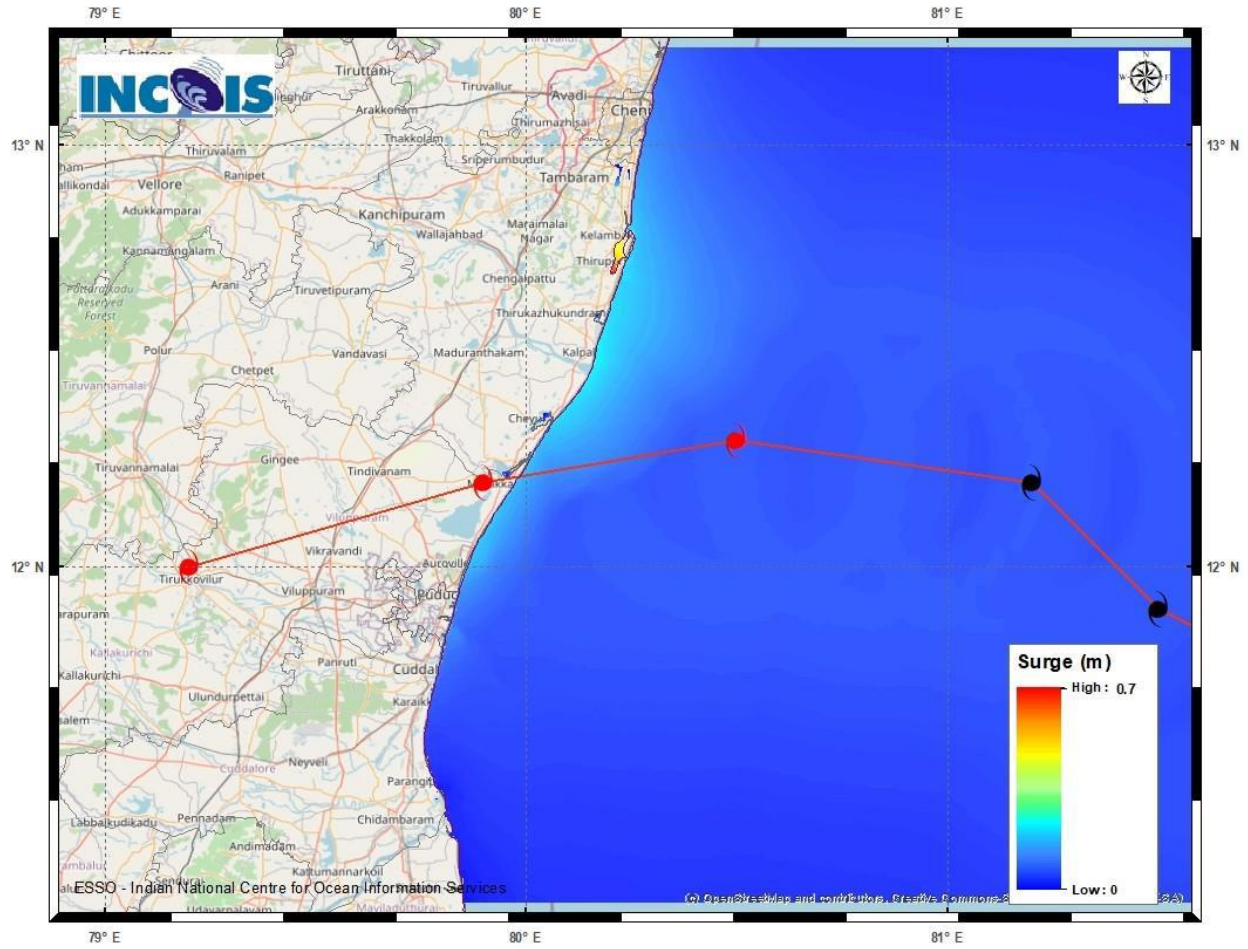
Flash Flood Risk

High Risk (Take Action)

Moderate Risk (Be Prepared)

Low Risk (Be Updated)

Storm Surge graphics



DISTRICT	STATE / UNION TERRITORY	NEAREST PLACE OF HABITATION	STORM SURGE (m)*	EXPECTED INUNDATION EXTENT (km)
<u>Kancheepuram</u>	<u>Tamil Nadu</u>	<u>Muthukadu</u>	<u>0.2-0.7</u>	<u>Upto 0.13</u>

Fishermen Warning Graphics

